
Instructions for 96" Tall Cabinet Installation

Parts Included:

Tall Cabinet
Toe Kick Assembly

Tools Needed:

Phillips Head Screwdriver
Drill with 3/32" Bit
Marking Tool
Tape Measure

Parts Needed:

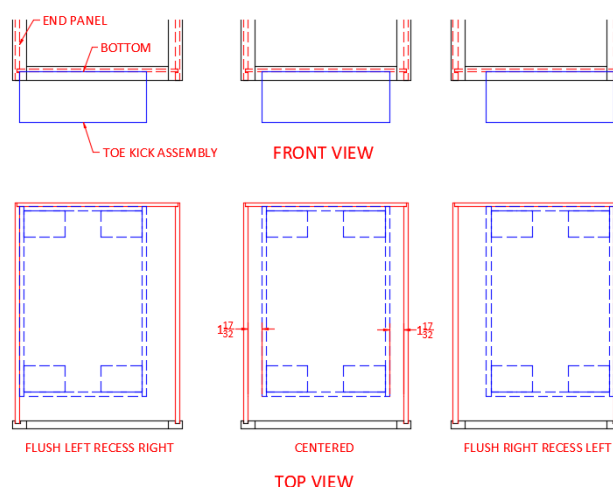
#10 x 1" Screws

STEP 1

Follow the Installation Instructions for Framed Cabinetry for the standard tall cabinet installation. Using the cabinet height of the tall cabinet to be installed (96") for Wall cabinet top line dimension denoted in Step 4 of instructions.

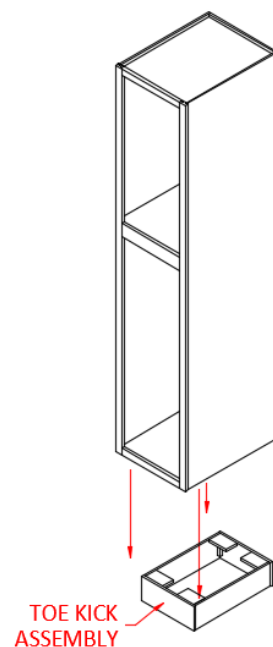
STEP 2

The unfinished toe kick sub-assembly is designed to be placed beneath a tall cabinet, extending vertically into the bottom recess, and is either center, or recessed left or right for flush toe kick or end panel applications. When attaching for flush toe kick application, a piece of 1/2" thick material will need to be added to the toe kick sub-assembly to allow the toe kick skin to align flush with the end panel.



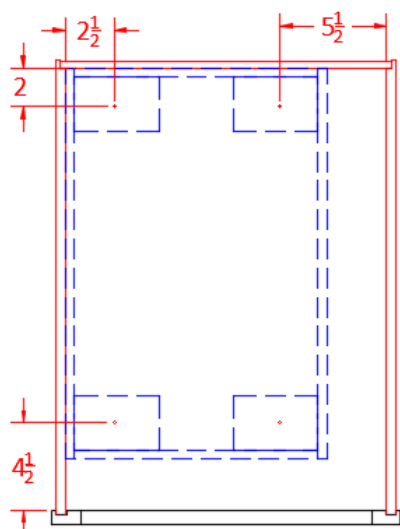
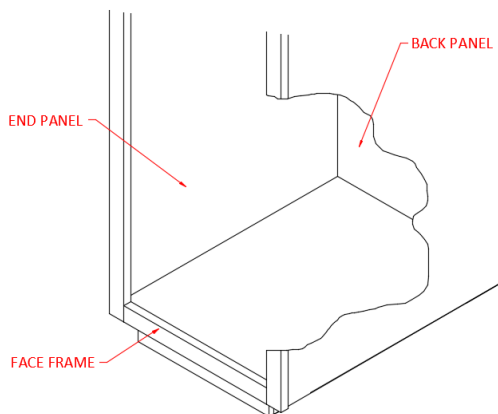
STEP 3

Stand tall cabinet upright (utility cabinet shown) near desired installation location. Position the unfinished toe kick sub-assembly as shown to the right. Slide unfinished toe kick sub-assembly underneath cabinet and locate as necessary for desired application. All toe kicks will be placed against back panel, for recess left or right—place against the opposite end panel. For the centered application, the space between the cabinet end panel and the toe kick end panel will be $1\frac{17}{32}$ " per side (shown in Step #1 Centered sketch).

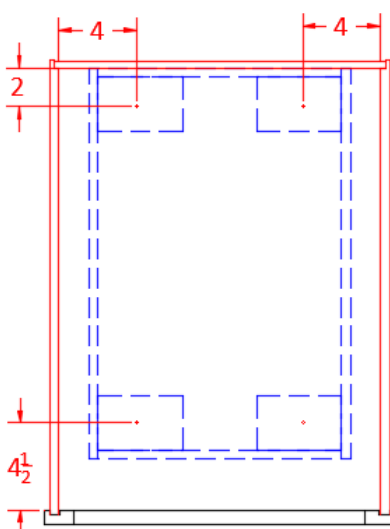


STEP 4

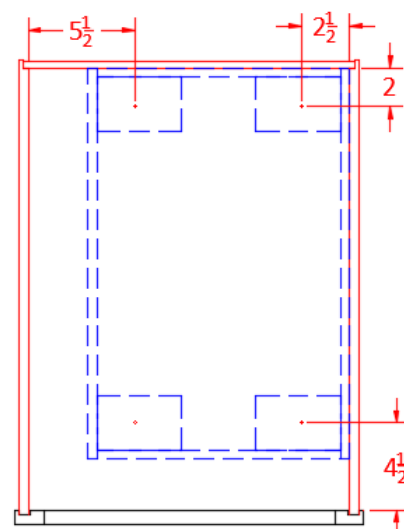
With the toe kick sub-assembly in place underneath tall cabinet in desired location, the cabinet bottom will need to be marked/predrilled for attachment. The locations will reference off the interior cabinet bottom –using the end panel, back panel and back side of the face frame as reference points. See below for attachment dimensions per toe kick location. After marking locations, pre-drill the cabinet bottom with a 3/32" diameter drill bit (4) places x 1" deep. Attach toe kick assembly to bottom with (4) #10 x 1" screws purchased separately.



FLUSH LEFT RECESS RIGHT



CENTERED



FLUSH RIGHT RECESS LEFT

STEP 5

Once the toe kick assembly is attached beneath 96" tall cabinet, continue to follow the Installation Instructions for Framed Cabinetry to complete cabinet installation.