

## Installation Instructions for Angle Corner Sink Front (ACSF)

### Parts Included:

Frame Assembly  
Toe Kick Assembly  
#8 x 1 1/8" Flat Hd Screws

### Tools Needed:

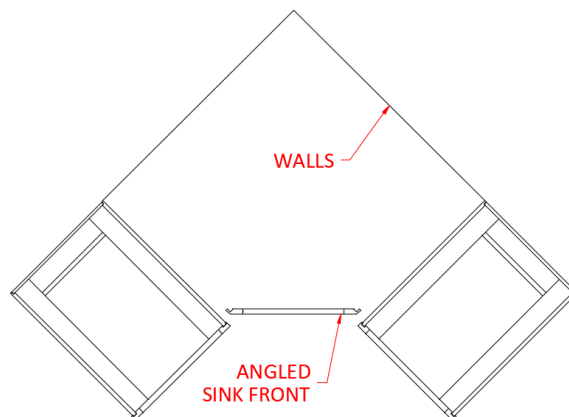
Phillips Head Screwdriver  
Drill with 1/16" Bit  
Saw  
Tape Measure  
Marking Tool

### Parts Needed:

2x4's for Framing bottom  
Bottom Material  
#6 x 2" Screws

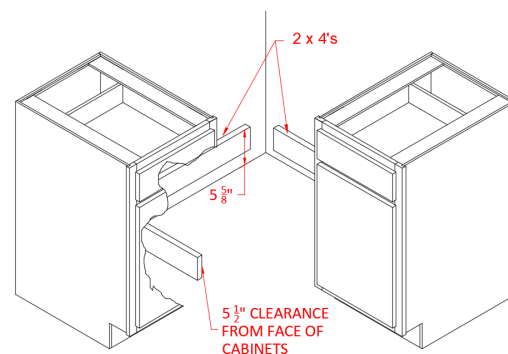
## STEP 1

Position base cabinets on both sides of Angled Corner Sink Front as shown. Check to ensure a proper fit of Angled Sink Front frame before mounting cabinets to wall. Install base cabinets following the standard base installation instructions.



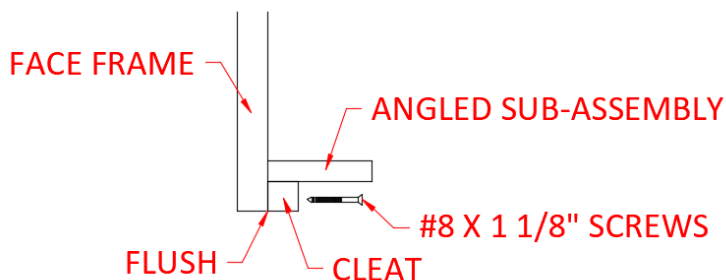
## STEP 2

With 2 x 4's, build a frame for the bottom of the Angled Corner Sink Front. The framing should be along the two adjacent cabinet end panels and the two walls behind the sink front corner. The top edge of the 2 x 4's should be 5 5/8" from the floor. There should also be 5 1/2" clearance from the front of the cabinet face frame to the front edge of the 2 x 4's.



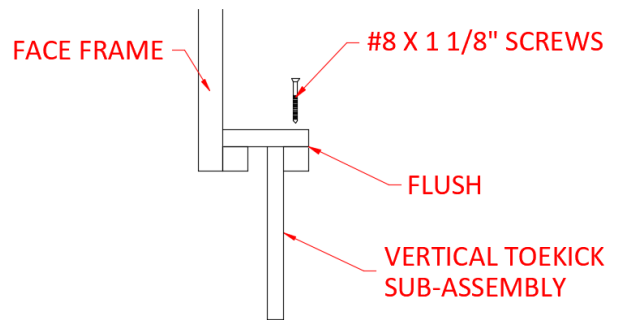
## STEP 3

Remove the doors from the Sink Front Corner assembly. Assemble the Toekick assembly to the sink front frame by first screwing the angled sub-assembly with cleat to the back of the frame. Align the bottom edge of the cleat with the bottom edge of the face frame and secure with the #8 x 1 1/8" screws.



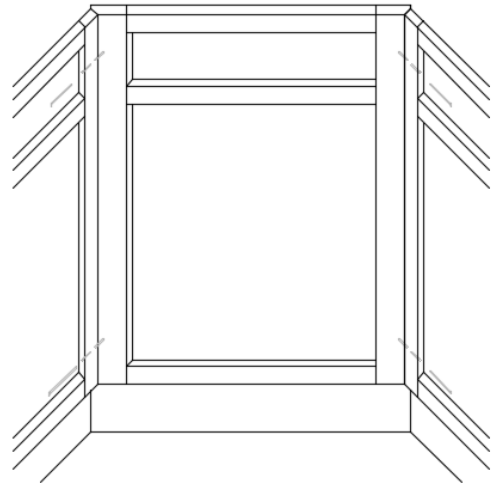
## STEP 4

Attach the vertical toekick sub-assembly with cleat to the angled sub-assembly. Align the back edge of the cleat with the back edge of the angled sub-assembly. Secure with the #8 x 1 1/8" screws.



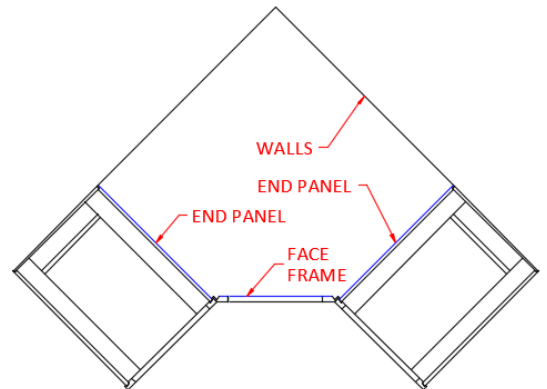
## STEP 5

Position Angled Sink Front Corner assembly between the two base cabinets. Clamp the face frames together. With a 1/16" drill bit, drill starter holes through frame of base cabinets into frame of Angled Sink Front Corner. One starter hole on top and one towards the bottom of the frame. Attach the frames using a recommended #6 x 2" screw. These screws will need to be purchased separately. Repeat on both sides of face frame.



## STEP 6

Lay the bottom material across the top of the adjoining cabinets and tight against the back walls. Scribe a line on the bottom material where the end panels and back of face frame are located. Trim bottom material to fit onto 2 x 4 frame.



## STEP 7

Place cut bottom onto 2x4 frame and angled sink from corner toe kick assembly.

Replace the doors and drawer front onto Angled Corner Sink Front.

