

Full-Extension with Premium Guide (SP) Roll Tray Installation Instructions

The full-extension (SP) roll tray kit is designed for easy installation using holes that are predrilled in the back and end panel.

Full-Extension Roll Tray Installation

1. Locate the left hand drawer guide (Part A), 1-side bracket (Part B), & the left hand drawer guide back bracket as shown in Figure "A"
2. Determine which set of pre-drilled holes in the end panel & back panel provide the desired vertical roll tray location. Install the plug in brackets & hardware as follows:
 - a. Push the pins on the drawer guide back bracket (Part E) into the back's predrilled holes.
 - b. Secure the drawer guide back bracket to the back using (3) #8 x 7/16" truss head screws (Part C) at the locations shown. Do NOT pre-drill the holes. **CARE** must be taken to NOT strip the screws.
 - c. At the corresponding location, push the pins on the side bracket (Part B) into the end panel's predrilled holes.
 - d. Slide the drawer guide into the back bracket that has been attached to the cabinet's back. The steel tab that protrudes to the outside of the drawer guide should fit in the cavity of the side bracket (Part B) and be pulled forward to contact the back of the cabinet's face frame. Secure the drawer slide through the side-bracket and into the cabinet's frame stile using (1) #8 x 1 1/8" flat head screw (Part D). The screw should be inserted through the vertical slot in the drawer guide. For ease of installation, it is recommended that the stile be predrilled using a 7/64" pilot hole. To ensure the drawer guide is in the proper vertical location make sure the bottom hole, located just below the vertical slot, in the drawer guide aligns with the bottom hole in the side bracket (Part B).
3. Assemble the right hand drawer guide following Steps # 1 & # 2 above.
4. Push the roll tray back onto the drawer guides until the hardware hooks plug into the holes drilled on the back of the roll tray. You will hear the hardware lock into the factory installed plastic locking mechanisms installed under the front of the roll tray when in the proper position. The roll tray can be removed by squeezing the plastic locking mechanisms.

Material List

Part A - (1) right hand, (1) left hand drawer guides complete with drawer guide brackets (Part E).

Part B - (2) side brackets

Part C - (6) #8 x 7/16" truss head screws

Part D - (2) #8 x 1 1/8" flat head screws

(1) Roll Tray (not shown)

Roll Tray Installation with 3" Center Vertical Frame Stile

1. Determine what side opening you plan to install the roll tray in the cabinet.
2. If the tray is installed in the left side of the cabinet (with the left end panel to accept the plug-in bracket), attach the left drawer guide & brackets following Steps # 1 & # 2 above for the basic installation. If the roll tray is installed on the right side of the cabinet (with the right end panel to accept the plug-in bracket), attach the right drawer guide & brackets following the same Steps # 1 & # 2 at the top of the instructions.
3. The center left or right hand drawer guide is attached to the center 3" wide vertical frame stile using a 90° spacer (Part F) and (1) #8 x 1 1/8" flat head screw (Part D) as shown in Figure "B". The center drawer guide must be installed the same distance up on the frame as the drawer guide on the opposite side. It is recommended that the stile be predrilled using a 7/64" pilot hole. Note: The 90° spacer brackets (Part F) will interfere with the lower hinges installed on the 3" vertical frame stile on B48 cabinets and are not designed to be used in this application.
4. Install the roll tray per Step # 4 listed above.

Material List

Part A - (1) right hand, (1) left hand drawer guides complete with drawer guide brackets (Part E).

Part B - (1) side bracket

Part C - (6) #8 x 7/16" truss head screws

Part D - (2) #8 x 1 1/8" flat head screws

Part F - (1) 90° spacer bracket

(1) Roll Tray (not shown)

FIGURE "A"

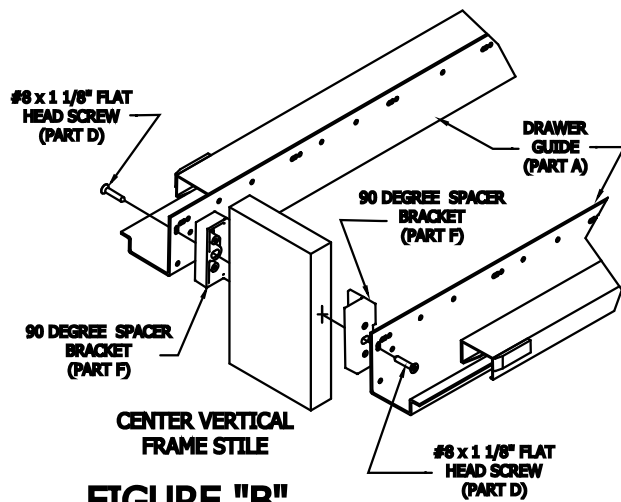
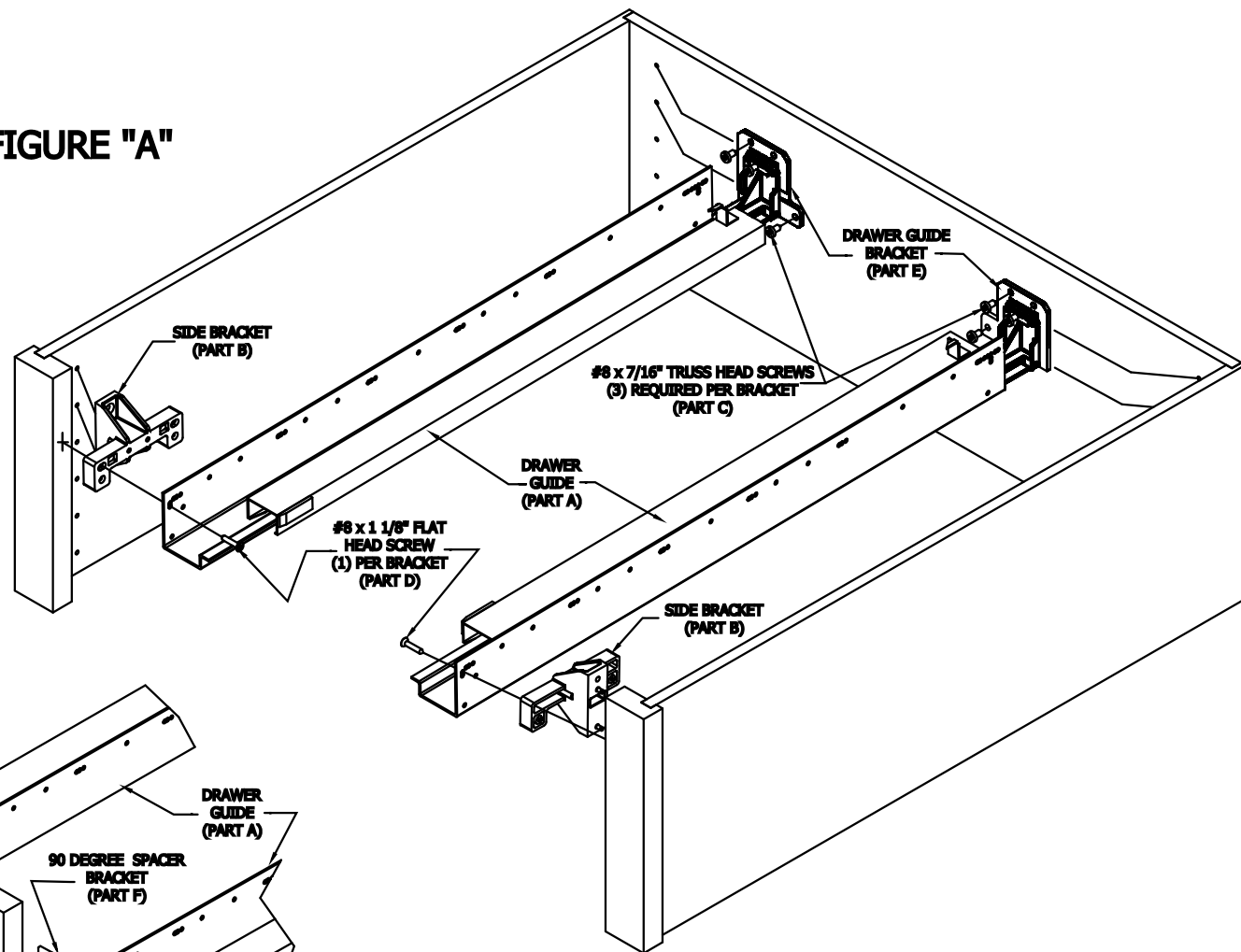


FIGURE "B"

FULL-EXTENSION (SP) ROLL TRAY KIT INSTALLATION INSTRUCTION

REV: B-12/4/12
S900054
PART # 6213000347